

Qustodio Professional



Have you completed your Weatec application?

**If not, contact your deacon for an application before continuing
to setup this Weatec approved filter!**

Qustodio Pro is an Internet filter and business control software for Windows and Android, devices.

Qustodio Pro allows you to:

1. **Block web sites** in specific categories
2. Force **Safe Search** on major search engines
3. **Monitor or block apps**
4. Set **Time Restrictions** to block web access during designated times
5. **View reports** to monitor and control web activity

Qustodio Pro is the version of Qustodio intended for business use. Users may choose a plan for \$9.95 per month and get protection for 5 devices. You may also upgrade to coverage for more devices (10 devices at \$19.95 per month) Unlike many content filters for mobile devices, Qustodio does not use its own browser, but filters content on other browsers and inserts a block page.

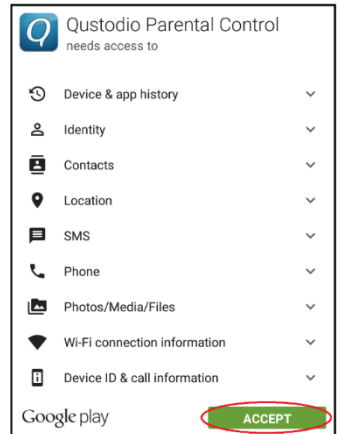
Note: After testing, Qustodio Pro has been approved as an acceptable category-based content filter if configured to meet the requirements set forth in the Weaverland Conference Electronic Technology Usage Guidelines. Please remember that no filter can be guaranteed to filter out all objectionable content; therefore the Weatec Accountability Software must be installed on all devices in order to be in compliance with Weaverland Conference guidelines. The accountability software logs all web traffic, thus fostering brotherhood accountability. So even if objectionable content is missed by Qustodio, the content will still trigger a flag on the accountability server. Use the following configuration as a minimum; there is nothing preventing you from choosing stricter settings.

Android Set-up Instructions

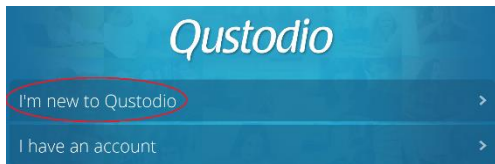
The following documentation will guide you through the installation and setup process. Installation may vary slightly depending on the Android version currently running on your device. (The following installation was done on Android version 5.0.2)



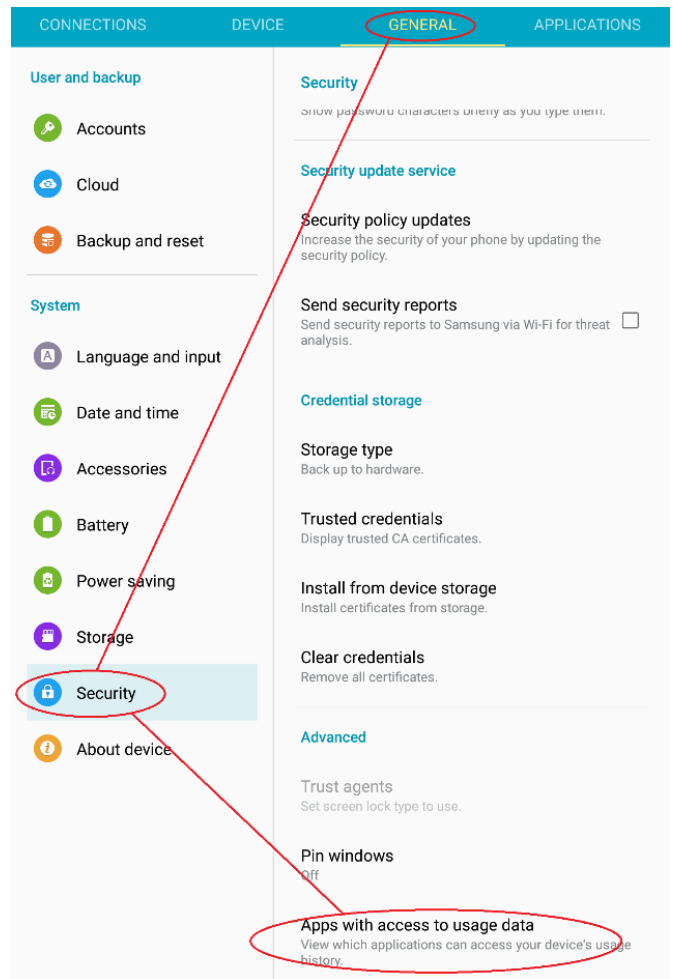
1. Go to the Google Play Store on your Android device; search for Qustodio Pro
2. Select Qustodio Pro, and select *Install*.
3. You will be prompted to allow Qustodio Pro to access data from your device. Select *Accept* to continue.
4. Qustodio Pro will download and install on your device. When the installation is finished, select *Open*.
5. On the next page, select *I'm new to Qustodio*. You will be taken to a Sign Up page. You will go through a series of pages asking for your name, email address, a password for the account, device name, and details on the device user. You will be asked to enter a birth year for the



user. The earliest year available is 1990. We recommend setting the year to 1990 when the birth year would be prior to this. On each page select *Next* when finished.



6. After entering your account information you will see the “Activate app supervision” page. Select *Activate Now*. This will take you to the device settings. Go to the *General* tab, select *Security* on the left side of the page, and on the right side scroll down and select “*Apps with access to usage data*”. You should see Qustodio listed here. Check the box beside Qustodio and if prompted, select *OK* to confirm.
7. You will be taken back to the Qustodio configuration. You will be asked to activate Qustodio as device administrator to prevent a user from uninstalling Qustodio. Select *Activate Now*. If prompted, select *Activate* to confirm.
8. You should now see a page confirming that Qustodio has been successfully installed. Select *Finish* at the bottom of the page.
9. You will need to enter your password to login to your new account. Select *Login*.



10. You are now ready to begin the configuration of your account’s filtering settings. Select *Device Settings*. Be sure to turn Protect Qustodio Settings to *ON*. You can also keep users from changing Android settings on the device unless they have a password by setting Protect Android Settings to *ON*. Go back when finished.
11. Select *Configure Online* to continue. You will be taken to your Qustodio account login page. Enter the email address associated with your account and password to continue. You will see the home page of your account showing the settings for the user you created. If you haven’t already confirmed your account by clicking the link in an email sent from Qustodio, you will be prompted to do it now.
12. Go to the *Rules* tab, and select the *Web Browsing Rules* tab. Set Enable website category restrictions to *YES*.

13. You will see the website categories listed. You can set categories to block by clicking the category and selecting Block Website's Category. Following is a list of Qustodio categories configured according to the Weaverland Conference Electronic Technology Usage Guidelines. (See "Guidelines for Internet" Section in your Guidelines Booklet)

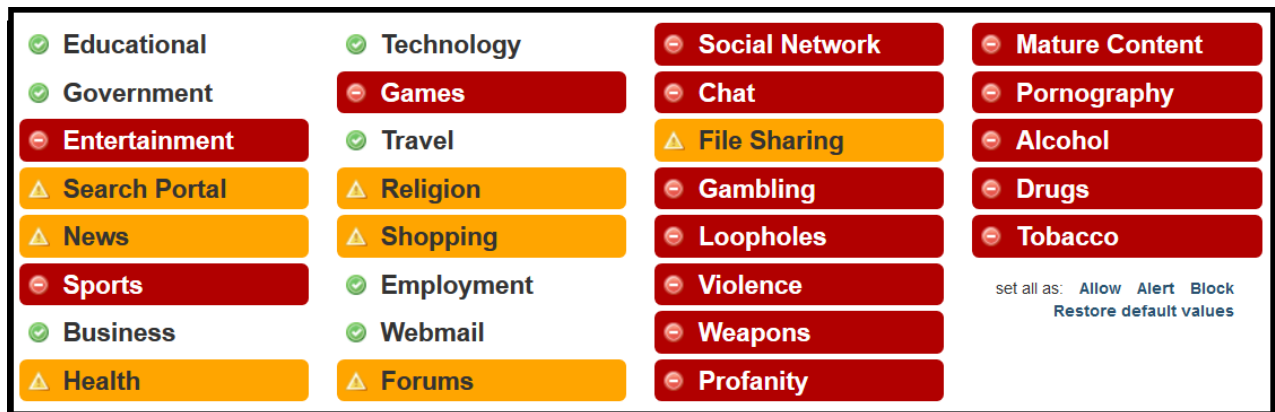
The "Non-Acceptable Use Categories" are listed in Red and must be set to Block.

The "Limited Use Categories" are listed in Amber and should be set to Alert.

The "Acceptable Use Categories" are listed in Green and can be set according to the needs of Users.

- | | | | |
|---|--|--|--|
| <input type="checkbox"/> Educational | <input type="checkbox"/> Technology | <input checked="" type="checkbox"/> Social Network | <input checked="" type="checkbox"/> Mature Content |
| <input type="checkbox"/> Government | <input checked="" type="checkbox"/> Games | <input checked="" type="checkbox"/> Chat | <input checked="" type="checkbox"/> Pornography |
| <input checked="" type="checkbox"/> Entertainment | <input type="checkbox"/> Travel | <input checked="" type="checkbox"/> File Sharing | <input checked="" type="checkbox"/> Alcohol |
| <input checked="" type="checkbox"/> Search Portal | <input checked="" type="checkbox"/> Religion | <input checked="" type="checkbox"/> Gambling | <input checked="" type="checkbox"/> Drugs |
| <input checked="" type="checkbox"/> News | <input checked="" type="checkbox"/> Shopping | <input checked="" type="checkbox"/> Loopholes | <input checked="" type="checkbox"/> Tobacco |
| <input checked="" type="checkbox"/> Sports | <input type="checkbox"/> Employment | <input checked="" type="checkbox"/> Violence | |
| <input type="checkbox"/> Business | <input type="checkbox"/> Webmail | <input checked="" type="checkbox"/> Weapons | |
| <input checked="" type="checkbox"/> Health | <input checked="" type="checkbox"/> Forums | <input checked="" type="checkbox"/> Profanity | |

Note: Since Qustodio offers an "Alert" setting, we are showing the Limited Use Categories as "Alert". Be aware that the "Alert" setting allows the user to override the warning screen. If your business does not need access to limited use categories, you will realize an extra measure of safety by blocking them. (If you find that blocking the categories under Limited Use causes websites to be blocked that are needed by your business you may need to change these settings. Another option would be to list specific websites in the Website exceptions list below the categories on the Web browsing rules page.) The screenshot below shows the configuration of the categories as listed by Qustodio on the Web Categories page according to the Weatec guidelines.



14. Below the categories list you will see an option for Uncategorized Websites. We recommend that you set this to *NO* to ensure no uncategorized sites may be accessed. Also set the Enforce Safe Search to *YES*.

Your Qustodio Installation and Setup is now complete. You will receive daily email reports from Qustodio by default. You can change this to daily, weekly, or not at all in the settings menu of your account. Qustodio also offers other options such as Time Usage Limits, Application Rules, etc. which can be configured according to the needs of users. You can change account settings at any time by logging into your account at <https://family.qustodio.com/?locale=en>.

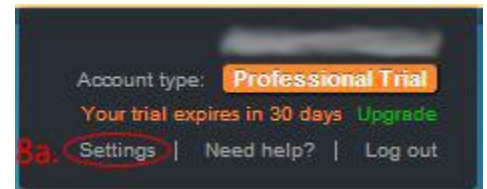
How to Get Help

1. Contact the WeaTec Helpdesk:
Phone: (717) 723-8978
Email: helpdesk@weatec.com
2. You can find additional support articles at <https://www.qustodio.com/en/help/>.

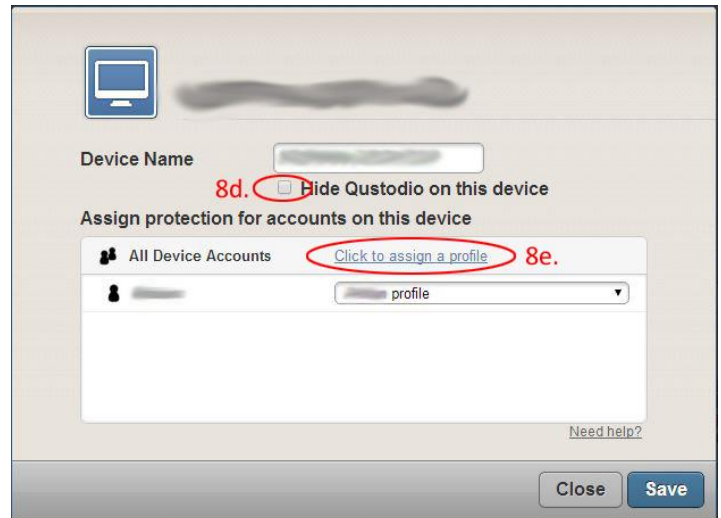
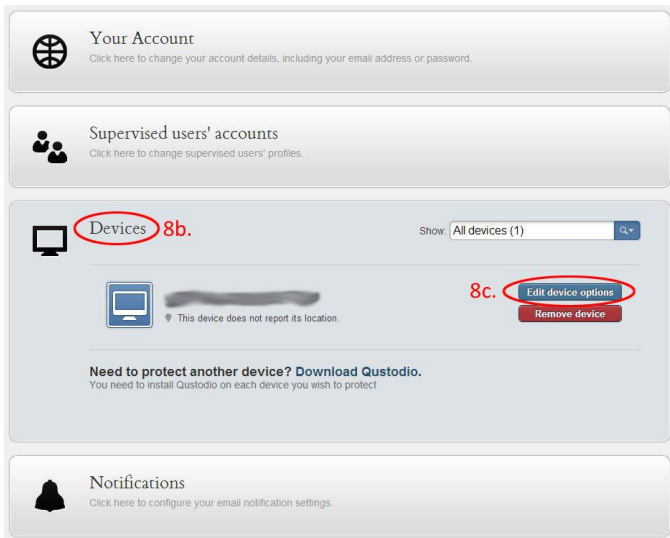
Windows Set-up Instructions

The following documentation will guide you through the Qustodio installation and setup process on Windows. Installation may vary slightly depending on the Windows version currently running on your device. (The following installation was done on Android Vista)

1. In your browser, go to <https://www.qustodio.com/en/business/downloads-for-business/> and click on the “Download for Desktop” button.
2. Click on the *QustodioProfessional.exe* file that has been downloaded.
3. If you get a Windows User Account Control warning, click “Continue.”
4. The Qustodio installer will begin. Click “Accept and Install” to accept the license agreement.
5. On the next page, select *I don't have a Qustodio account*. You will be taken to a Sign Up page, followed by a series of pages asking for your name, email address, a password for the account, device name, and details on the device user. Follow the prompts until you have finished installing Qustodio on your computer.
6. To verify your email address, find the email from Qustodio and click on the “Confirm Your Account” button. The link will take you to <https://manage.qustodio.com/> to confirm your account.
7. Use the email address and password you supplied during the installation phase to log into your new account.
8. To apply settings to all user accounts on computer:
 - a. In the upper right-hand corner, click on “settings.”
 - b. Click on “Devices” to open the accordion.
 - c. For the device you are controlling, click “Edit device options.”
 - d. You have the option to “Hide Qustodio on this device” which makes Qustodio invisible to the device user.



e. For “All Device Accounts,” choose “Click to assign a profile.” Choose an appropriate profile,



and click “Save.”

9. To configure the filter categories:
 - a. In the menu bar, click on the profile you want to configure.
 - b. In the secondary menu, choose “Rules.”
 - c. Continue the configuration steps under step 12 of the Android set-up instructions.