

# Additional Ever Accountable Tools

Ever Accountable is a third-party app that Weatec uses to link devices to the accountability portal. For privacy reasons, the information reported to Weatec is kept to a minimum. If you are looking for more personalized and detailed accountability for your child or family member, you can access much more information on Ever Accountable than what is available on the Weatec accountability portal. To view these reports, you will need to set yourself as an accountability partner in Ever Accountable.

Some of the benefits of monitoring Ever Accountable reports are,

- Monitoring usage within apps that Weatec considers private. One example of this would be Cloud veil Messenger usage. If monitoring for the Cloud veil app is enabled, you can review the type of groups and content that your teenager is being exposed to. No usage from this app will show on the Weatec Report server as it is a private app and Weatec discards this information.

- Ever Accountable also has a screenshot option which allows you additional insight into your family's usage. Weatec does not use this feature for the sake of privacy, but it can be a handy tool for a parent.

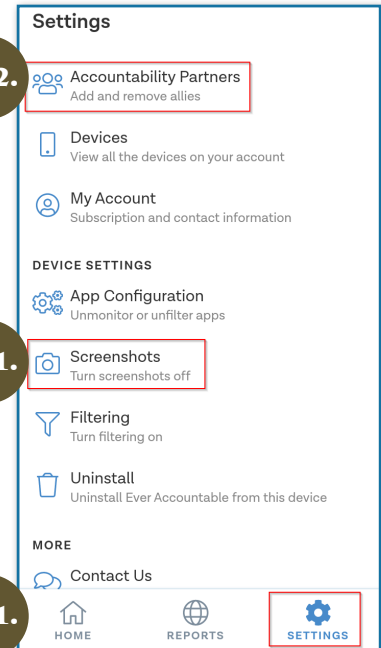
**A: Setup the account** using the [Ever Accountable Setup instructions](#) and install the app on the device if you have not already done so.

## B: Add Accountability Partner

1. Open the Settings Tab
2. Select Accountability partners.
3. Enter an email address for the accountability partner and select the Add button. Each accountability partner will get a weekly email summary indicating if there was any suspicious activity in the past week. Each partner will also get an email each time suspicious activity is detected. **Note:** Do Not remove report@weatec.com from the accountability partners list.

## C: Configure Screenshots

1. From the main Settings page, select screenshots.
2. Press the Screenshots switch to toggle screenshots setting on or off.
3. Select preference of “No Blur” or “Blurred” setting. The text on “No Blur” screenshots is readable on the reports. This may be an invasion of privacy and should be used with caution.
4. Select the back arrow to return to the main Settings page.



### Add or remove an accountability partner.

Assign someone you trust like a spouse, pastor, coach, best friend. Communicate with them separately about this role of trust.

**B: 3.**

I have informed the owner of the email address about being my accountability partner and that they will begin receiving email communication from Ever Accountable.

Type an email address here

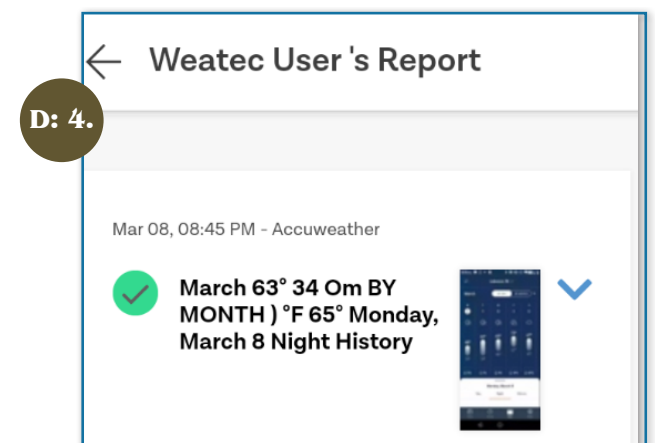
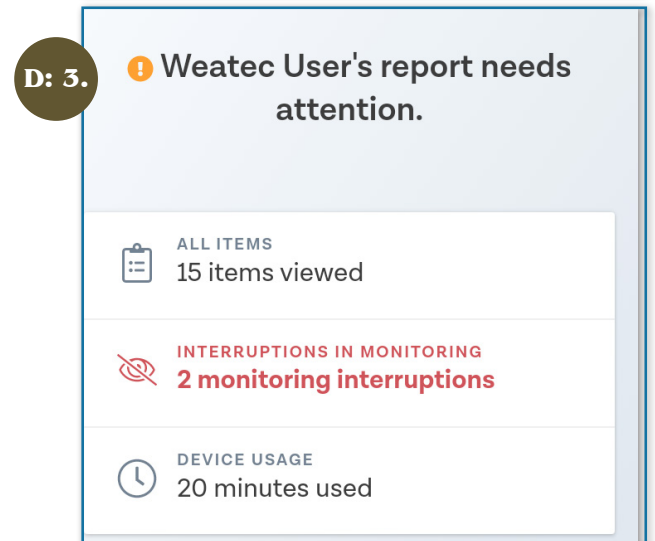
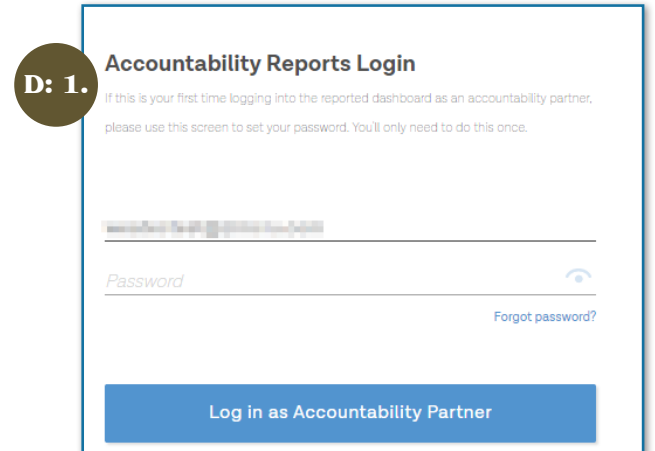
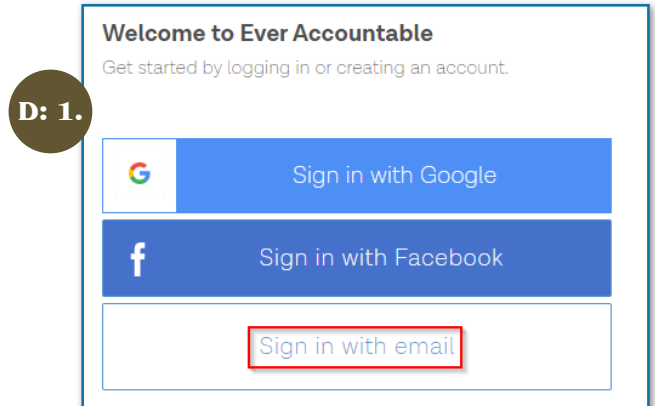
Add

Use phone number instead



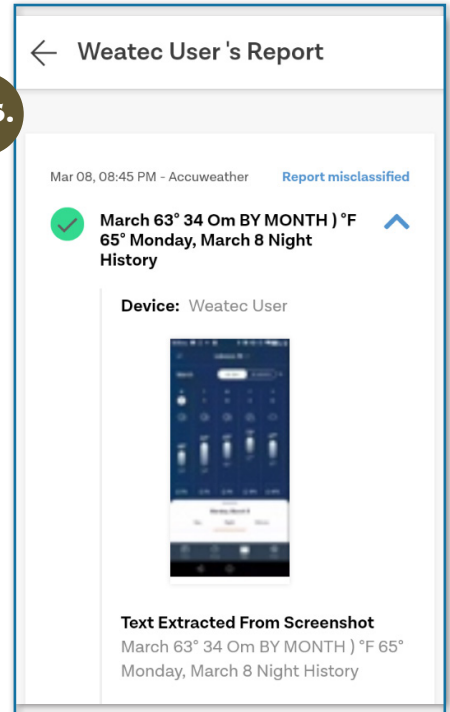
## D: Reports

1. **View Reports from a computer with the email link.** The accountability partner can access the reports by clicking the link in the report notification email which will open a web page with login options. Select 'Sign in with email' and enter your password to sign in as Accountability Partner.
2. **View Reports from the app.** From any screen in the app, select the Reports button at the bottom of the screen.
3. The report's home screen will show all items, device usage, and any alerts for the report period.
4. Selecting the 'All Items' button will show a scrolling list of all monitored app activity with summary text and a thumbnail of the screenshot if that setting is enabled. The report item detail view will open after selecting the dropdown arrow.



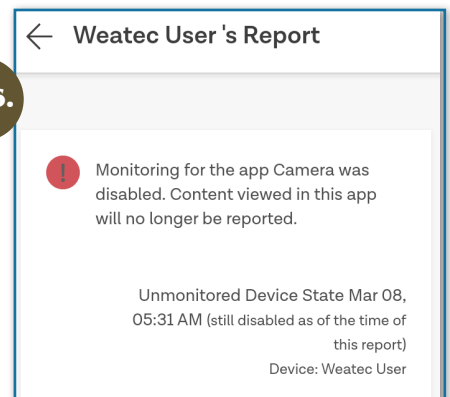
5. The report item detail view will show app activity details along with a screenshot if enabled.

D: 5.



6. Selecting an alert (if any) from the report home screen will show the details of the alert.

D: 6.



7. Selecting device usage from the report home screen will show app usage details for the report period for all apps regardless if they are monitored or not.

D: 7.

